

pfSense - 2.0 and beyond

Chris Buechler - cmb@pfsense.org

Scott Ullrich - sullrich@pfsense.org



History of pfSense

- Started as a work project 13 years ago when we needed a internal firewall
- Originally Linux, switched to FreeBSD 2.2
- Evolution of this path shrunk the firewall down to a Soekris size
- Moatware was started
- Met Chris Buechler during this time
- Sell a number of products
- Sales guy moves to Florida
- Moatware fails
- Chris and myself debate starting over fresh
- pfSense is forked from m0n0wall roughly 4 years ago
- Still going strong today - momentum is snowballing



pfSense Overview

- Customized FreeBSD distribution tailored for use as a firewall and router.
- pfSense has many base features and can be extended with the package system including one touch installations of popular 3rd party packages such as SpamD (spam filter) and Squid (web caching).
- Includes many features found in commercial products such as Cisco PIX, Sonicwall, Watchguard, etc.
- Many support avenues available, mailing lists, forum and commercial support.
- Has the best price on the planet.... Free!



pfSense Platforms

- Live CD
- Full Install
- Embedded
- Developers



Project statistics

- millions of downloads served
- 11,400 forum members
- ~1200 mailing list users (support and discussion)
- 21 developers
- 12 active developers (committed in the last year)
- Consistent Google growth



New features (base)

- Layer 7 QoS
- New traffic shaper
- User Manager
- OpenVPN Improvements
- PHP 5
- Certificate Manager
- Routing / Gateways improvements
- Dashboard
- Load balancer changes
- Web based PFTOP, TOP
- IGMP proxy



New features (continued)

- Complete new interface system
- Multiple DynDNS interface support
- DHCP Server improvements
- PPTP Improvements
- New LIBALIAS based in-kernel FTP helper
- Improved load balancing (incoming and outgoing)



Layer 7 QoS improvements

- Based on regex matching system
- Detects BitTorrent very nicely
- Can detect between bulk and interactive traffic ?
- About X% overhead for L7
- PF peels off first X bytes of header for inspection via divert



New traffic shaper

- Rewritten from scratch by Ermal Luci
- Supports HFSC, CBQ, FairQ, PriQ
- Uses ALTQ
- Now works on more than 2 interfaces
- Supports bridging
- Pretty much all limitations are now gone!



User Manager

- Full user manager with user and groups support
- Can allow an account to specific areas
- Consolidating all accounts in various areas (VPN users, etc)
- LDAP authentication support
- Per user certificate support



IPsec

- Major overhaul by Matthew Grooms, ipsec-tools committer and author of Shrew Soft IPsec client - <http://shrew.net>
- Multiple Phase 2 per Phase 1
- Transport mode support added



IPsec

- Xauth - user and group authentication
 - pfSense local user database
 - LDAP
 - Microsoft Active Directory
 - Novell eDirectory
 - and others...
 - RADIUS
 - Microsoft Active Directory
 - many others
- Now a drop-in replacement for Cisco VPN concentrators, PIX firewalls, and routers



OpenVPN

- Major overhaul by Matthew Grooms
- Can now export a Windows Installer bundled with Certificates
- Now considered a first class VPN topology in pfSense



New interfaces

- GRE
- gif
- PPP (dial up POTS modems, 3G cellular wireless)
- Many 3G wireless additions
- lagg(4) interface bonding
 - failover
 - load balance
 - round robin
 - Etherchannel
 - LACP



Bridging enhancements

- all of if_bridge capabilities supported
- 18 Advanced configuration options available
- STP and RSTP - fully configurable
- SPAN port capable



Certificate Manager

- Certificate authority support
- Generate OpenVPN certificates
- Generate user certificates
- Generate HTTPS certificate
- Generate IPsec certificates
- Revocation support
- Import existing certificates



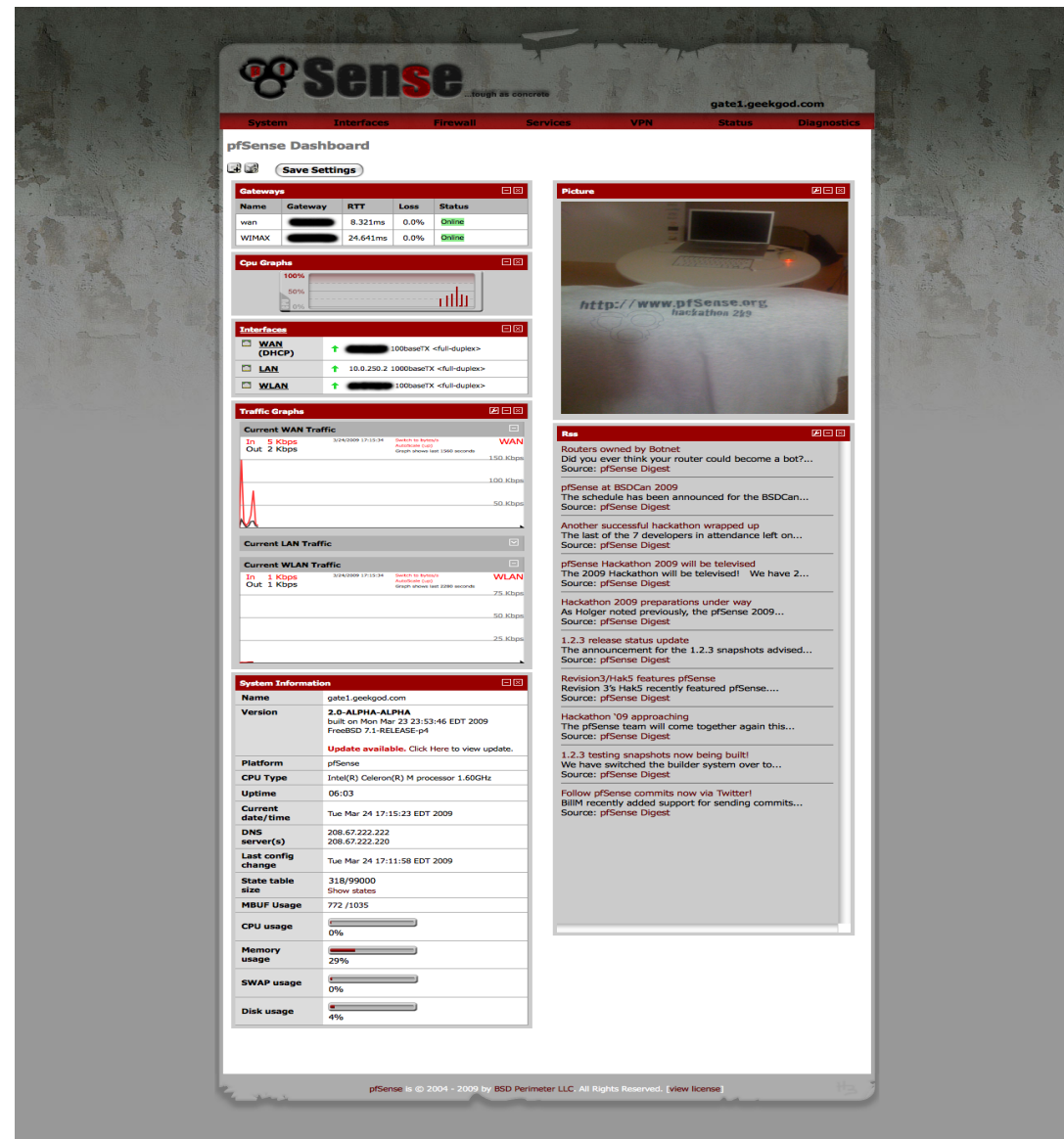
Routing / Gateway Additions

- New gateway group feature
- Failover threshold supports RTT or packet loss triggers
- Groups now employ a "Tier" type system
 - Supports balancing
 - Supports interface failover ordering
 - Can fail on packet loss % or 100% down situations



Dashboard

- Allows quick access to system information
- Added RSS widget
- Added picture widget
- Added gateways widget with RTT and loss reporting
- New AJAX CPU utilization widget



Load Balancer changes (relayd)

- Layer3 balancing
- Layer7 balancing
- New monitoring features
 - Send/expect
 - DNS
 - HTTP
 - HTTPS



Web based pftop

Diagnostics: PFTop

Sort type: bytes

```
pfTop: Up State 1-341/341, View: default, Order: bytes
```

PR	D	SRC	DEST	STATE	AGE	EXP	PKTS	BYTES	
udp	I	0.0.0.0:68		55:67	0:1	6748	150	40M	19G
tcp	I	10.0.250.15:56498		1:8000	4:4	5630	7200m	102K	91M
tcp	O	10.0.250.15:56498		1:8000	4:4	5630	7200m	102K	91M
udp	O	10.0.250.2:34718		50:1900	1:0	1765m	146	28248	9827K
carp	O	10.0.250.2:0			1:0	1766m	30	103K	5781K
tcp	I	10.0.250.23:50693			4:4	9396	7195m	52076	4860K
tcp	O	10.0.250.23:50693			4:4	9396	7195m	52076	4860K
tcp	I	10.0.250.23:52186		:80	4:4	2638	7199m	3801	1993K
tcp	O	10.0.250.23:52186		:80	4:4	2638	7199m	3801	1993K
icmp	O	69.64.8.130:35903			0:0	15508	10	30913	1932K
icmp	O	96.28.81.7:35903		:0	0:0	15508	10	24237	1514K
tcp	I	10.0.250.23:52480		:80	4:4	1216	7199m	1660	1405K
tcp	O	10.0.250.23:52480		:80	4:4	1216	7199m	1660	1405K
tcp	I	10.0.250.23:58593		0	4:4	1765m	7199m	6126	804K
tcp	O	10.0.250.23:58593		0	4:4	1765m	7199m	6126	804K
tcp	I	10.0.250.23:52502		:80	4:4	1141	7199m	1020	747K
tcp	O	10.0.250.23:52502		:80	4:4	1141	7199m	1020	747K
tcp	I	10.0.250.23:58938		2:6667	4:4	1760m	7199m	5579	723K
tcp	O	10.0.250.23:58938		2:6667	4:4	1760m	7199m	5579	723K
icmp	I	10.0.250.6:0		894	0:0	4756	10	9306	581K
tcp	I	10.0.250.23:57973		:65525	4:4	64101	6183m	824	344K
tcp	O	10.0.250.23:57973		:65525	4:4	64101	6183m	824	344K
tcp	I	10.0.250.23:52713			10:10	305	115	334	232K
tcp	I	10.0.250.23:52503		:80	4:4	1141	7199m	455	212K
tcp	O	10.0.250.23:52503		:80	4:4	1141	7199m	455	212K
tcp	I	10.0.250.23:52504		:80	4:4	1141	7199m	466	204K
tcp	O	10.0.250.23:52504		:80	4:4	1141	7199m	466	204K
tcp	I	10.0.250.23:52505		:80	4:4	1141	7199m	412	178K
tcp	O	10.0.250.23:52505		:80	4:4	1141	7199m	412	178K
tcp	I	10.0.250.23:52780			4:4	16	7200m	201	161K
tcp	I	10.0.250.252:58317			9:9	152	31	207	112K
udp	I	69.64.6.4:500		00	2:2	3817	899	770	92664
tcp	I	10.0.250.23:59029		0413	4:4	1758m	5448m	113	84078
tcp	O	10.0.250.23:59029		0413	4:4	1758m	5448m	113	84078
udp	I	10.0.250.15:49793			2:2	6133	500	742	81570
udp	I	10.0.250.15:61604			2:2	6977	887	698	74632
tcp	I	10.0.250.23:52745		443	9:9	114	95	133	71244
tcp	O	10.0.250.23:52745		443	9:9	114	95	133	71244
tcp	I	10.0.250.23:52732			4:4	195	7199m	783	58277
udp	I	10.0.250.15:59529			2:2	3497	894	439	48265
tcp	I	10.0.250.23:52756		:80	4:4	107	7198m	68	43139
tcp	O	10.0.250.23:52756		:80	4:4	107	7198m	68	43139
tcp	I	10.0.250.23:61410		:6559	4:4	60282	6200m	91	42910
tcp	O	10.0.250.23:61410		:6559	4:4	60282	6200m	91	42910
tcp	I	10.0.250.23:52738		443	9:9	145	66	59	23705
tcp	O	10.0.250.23:52738		443	9:9	145	66	59	23705
tcp	I	10.0.250.23:58607		60440	4:4	1765m	5438m	53	20489
tcp	O	10.0.250.23:58607		60440	4:4	1765m	5438m	53	20489
tcp	I	10.0.250.23:52721			10:10	287	127	63	19283
tcp	I	10.0.250.23:52755		:80	4:4	107	7198m	40	15161
tcp	O	10.0.250.23:52755		:80	4:4	107	7198m	40	15161
tcp	I	10.0.250.23:52754		:80	4:4	107	7198m	34	14742
tcp	O	10.0.250.23:52754		:80	4:4	107	7198m	34	14742
tcp	I	10.0.250.23:52757		:80	4:4	107	7198m	37	14341



Web based top

Diagnostics: System Activity

```
last pid: 45245; load averages:  0.14,  0.03,  0.01  up 7+16:18:25   10:48:10
41 processes:  1 running, 39 sleeping, 1 zombie
```

```
Mem: 79M Active, 19M Inact, 41M Wired, 212K Cache, 23M Buf, 822M Free
Swap: 2048M Total, 2048M Free
```

PID	USERNAME	THR	PRI	NICE	SIZE	RES	STATE	TIME	WCPU	COMMAND
20997	root	1	76	0	49696K	26024K	pipepd	0:28	26.76%	php
63149	root	1	76	20	3604K	1804K	wait	1:38	0.00%	sh
12331	nobody	1	44	0	3264K	1500K	select	1:35	0.00%	apinger
22012	nobody	1	44	0	3264K	2000K	select	1:27	0.00%	dnsmasq
34434	root	1	44	0	5916K	4592K	select	0:28	0.00%	racoona
8617	root	1	44	0	3376K	1556K	select	0:21	0.00%	syslogd
15650	root	1	44	0	5032K	3508K	select	0:15	0.00%	openvpn
58987	root	1	44	0	5860K	3864K	bpf	0:12	0.00%	tcpdump
16886	root	1	44	0	6440K	4444K	kqread	0:12	0.00%	lighttpd
59115	root	1	44	0	3264K	1368K	pipepd	0:10	0.00%	logger
25703	root	1	44	0	3296K	1456K	select	0:03	0.00%	miniupnpd
20574	root	1	51	0	41464K	18872K	accept	0:03	0.00%	php
25467	root	1	51	0	3604K	1816K	wait	0:02	0.00%	sh
10647	root	1	44	20	3264K	1348K	nanslp	0:02	0.00%	check_reload_status
26966	root	1	44	0	3352K	1552K	nanslp	0:02	0.00%	cron
48858	_ntp	1	44	0	3264K	1480K	select	0:02	0.00%	ntpd
46284	_dhcp	1	44	0	3264K	1564K	select	0:02	0.00%	dhclient
17808	root	1	76	0	41464K	18576K	accept	0:01	0.00%	php



IGMP Proxy

- Useful for Video in some cases
- Some phone systems use IGMP for overhead speakers
- IP TV
- Gaming



New interface system

- All interfaces treated equally - no special status for LAN/WAN.
- Multi interface PPPoE support (WAN)
- Multi interface PPTP support (WAN)
- Allows just one interface to be assigned (appliance mode)
- QinQ VLAN support
- Interface groups



DHCP Server improvements

- Dynamic DNS client name registration support
- Definable NTP Servers
- LDAP URI Integration
- Now allows duplicate IP address registration for multiple MAC addresses
- Network booting related additions
 - Next-server
 - Filename
 - root-path-string



New features (packages)

- Jails
- FreeSWITCH
- Squid 3
- Avahi
- Open-VM Tools
- PHP Service
- OpenVPN Client Export Utility (Windows)
- TFTP Server (useful for upgrading Cisco/HP Switches, etc)



Appliance building

- pfSense builder system can now automatically generate custom "Appliances" from an overlay file.
- Simply add files that you want to include into a directory and define the directory in pfsense_local.sh custom_overlay directive
- We will go over a quick appliance build later in this presentation



FreeSWITCH Appliance

Can be run on pfSense directly or as a dedicated appliance.

Features:

- Voice Mail
- Voice Mail to e-mail (one or more email addresses, also can be sent to special email addresses for SMS Text Messages)
- Auto Attendant
- Music on Hold (.wav)
- Recordings
- Follow Me
- Text to Speech (flite)



FreeSWITCH Appliance

Features Continued:

- Call Park
- Call Forward
- DISA (Direct Inward/Outward System Access)
- Call Queues
- SIP (TLS) and SRTP and more.
- Simple to call between multiple systems using the Internet.
- Call Eavesdrop (aka barge)
- Call Recording
- Call Intercept by Group, Global, Extension



FreeSWITCH Appliance

Features Continued:

- Call Park
- Google 411

Email: markjcrane@gmail.com

Wiki: <http://doc.pfsense.org/index.php/FreeSWITCH>

IRC: [#pfsense-freeswitch](#)



DNS Server Appliance

- Many features removed such as DHCP Server, VPN, etc
- Two versions released so far, newest based on FreeBSD 8
- Based on TinyDNS from DJ Bernstein
- Automatically synchronizes changes to 5 other hosts
- Automatically fail to backup records on host failure using ICMP
- Automatically fail to backup record if WAN RTT > X
- Automatically fail to backup record if RTT to host Y.Y.Y.Y > X
- Zone transfer support for the BIND folks
- Configuration data stored in master config.xml file



Creating an appliance (overview)

- Install FreeBSD 7
- Follow <http://devwiki.pfsense.org/DevelopersBootStrapAndDevIso>
- Excute these shell commands:
 - `cd /home/pfsense/tool/builder_scripts`
 - `cp builder_profiles/pfDNS/pfsense_local.sh`
 - `./build_iso.sh`



Creating your own appliance (Overview)

- cd
/home/pfsense/tools/builder_scripts/builder_profiles/
- cp -R pfDNS MyAppliance && cd MyAppliance
- grep -R "pfDNS" * | cut -d":" -f1 | sort -u
README
config/config.xml
copy_overlay/boot/beastie.4th
copy_overlay/etc/inc/globals.inc
copy_overlay/usr/local/share/dfuibe_lua/conf/pfSense.
lua
pfsense_local.sh
- Edit the above files to your liking



Building your appliance (overview)

- `cd /home/pfsense/tools/builder_scripts`
- `cp
builder_profiles/MyAppliance/pfsense_local.
sh .`
- `./build_iso.sh`
- See <http://devwiki.pfsense.org/CreatingAnAppliance>



BSD Perimeter milestones

- Chris is now working Full Time
- BSD Perimeter coordinating MIPS port for RouterStation
- pfSense book will be released in the next couple months
- Commercial support is growing with satisfied customers
- Sponsored IPsec improvements
- Sponsoring various misc projects on behalf of customer, IGMP package for 1.2.*, etc



Questions?

Comments?



Thanks for attending!

sullrich@pfsense.org
cmb@pfsense.org

